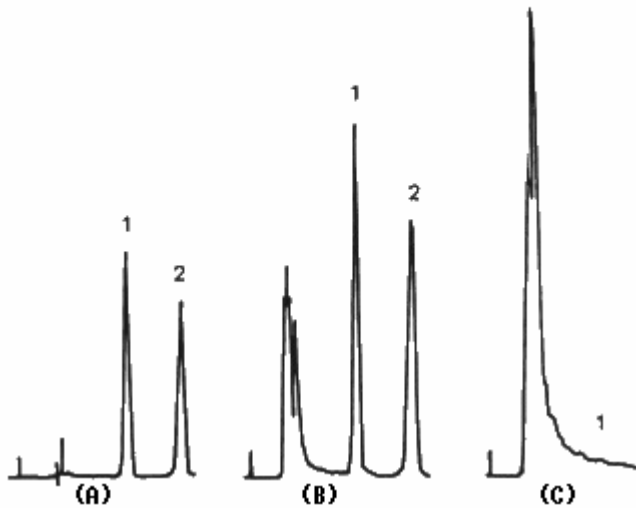


Sample: (A) Standards 20 μ L
(B) Instant noodle
(C) Powdered soy sauce



Column : Shodex AXpak WA-624 (6.0mmID*150mm) Eluent : 0.1M
NaH₂PO₄ aq./CH₃CN=85/15 Flow rate : 1.0mL/min Detector : UV(260nm) Column
temp. : 50°C